



WOODSIDE PRIMARY ACADEMY ATTENDANCE NEWSLETTER



Welcome to our Spring 'BE PROACTIVE' attendance update!

ANN AND NAZ'S ATTENDANCE NEWS

Welcome to our Spring Attendance Newsletter

The Focus for this newsletter is to support parents with useful information based on a form we sent out and outline any upcoming events.

We would also like to thank you for all the purchases of our Splat T shirts. We are now in very limited numbers for each size



We would also like to wish all our children and families a lovely Easter break

Contact Us



SCHOOL: 020 8520 5168

NURSERY: 020 3839 4971

General Enquiries

school@woodside-academy.org

Attendance

attendance@woodside-academy.org

Nursery All Enquiries

nursery@woodside-academy.org

Teatime & Breakfast Club

extendedservices@woodside-academy.org

Finance

finance@woodside-academy.org

Friday Afternoon Childcare

fridayafternoonchildcare@woodside-academy.org

Reception New Admissions

receptionadmissions@woodside-academy.org

Our last day
of term is
Thursday
28th March
2024

We return
to school
Monday
15th April
2024

Bridge
Site
09:00am -
3:45am

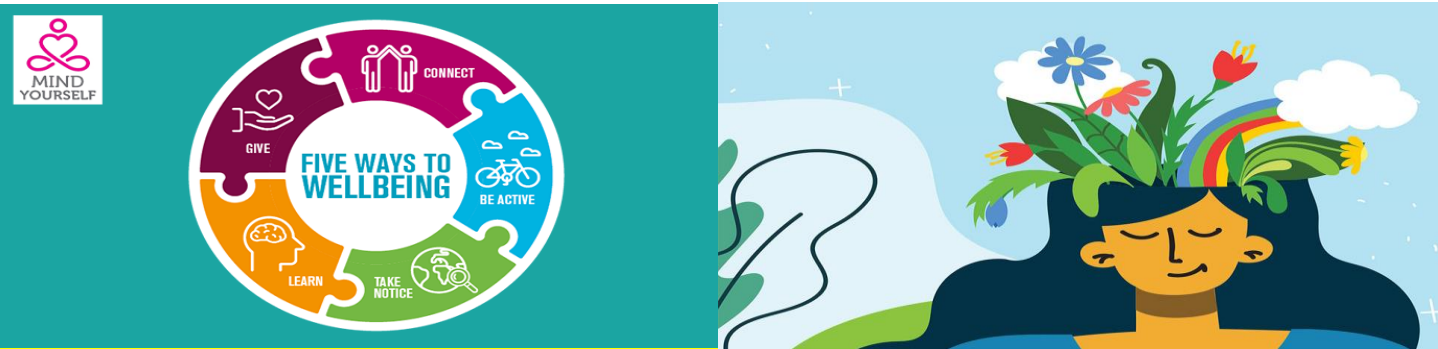
Forest
Site 8:45
am -
3:30pm



WOODSIDE PRIMARY ACADEMY ATTENDANCE NEWSLETTER



Welcome to our Autumn 'BE PROACTIVE' attendance update!



We would like to offer some links and suggestions on the following:

Mental Health

If you are struggling with your mental health, it is important to reach out and get help from a health professional. Please contact your GP to get the help you need.

Also, there are useful links on the Waltham Forest Website

<https://www.walthamforest.gov.uk/mentalhealth>

Please also see link for:

<https://www.samaritans.org/how-we-can-help/contact-samaritan/>

<https://www.nhs.uk/live-well/getting-help-for-domestic-violence/>

<https://www.nhs.uk/mental-health/children-and-young-adults/mental-health-support/>

Please use these links and reach out to support yourselves, do let us know if you need any further support with regards to mental health.



WOODSIDE PRIMARY ACADEMY ATTENDANCE NEWSLETTER



Welcome to our Spring 'BE PROACTIVE' attendance update!



We will be holding a coffee morning, where we will be inviting a guest in to provide key information on a support subject area. We are looking to hold this in the first week of May and will confirm date and guest.



The next nurse drop-in session is Friday 26th April 2024 at our Bridge Site. If you would like your child to be seen please contact either office



In crisis and don't know what to do?



If you live in Waltham Forest, Redbridge, Barking & Dagenham or Havering, you can give us a call for mental health help and advice, anytime of the day or night, **0800 995 1000***

We have somebody on the other end of the line who can help.

- We can arrange for you to speak with a mental health professional
- We can advise you about what service to contact to get the support you need
- We are always available, every day of the year, 24 hours a day.

We return to school
Monday 15th
April 2024

* This is a freephone number and callers will not be charged

Not in Crisis? Just need to speak to somebody?
Call Samaritans on 116 123 for free



WOODSIDE PRIMARY ACADEMY ATTENDANCE NEWSLETTER



Welcome to our Autumn 'BE PROACTIVE' attendance update!

Here are some of our Class Winners so far this year

