



WOODSIDE PRIMARY ACADEMY NURSERY



Confident Grasshoppers

0 - 2 Provision

Information Booklet

2023-2024

020 8509 4375

nursery@woodside-academy.org



WELCOME & PHILOSOPHY



WELCOME

Welcome to Woodside Nursery **Grasshopper Room**.

This is our baby provision for **12** babies who are aged from **6 months to 2 years old**.

We believe that babies should experience **home from home care**, and we have considered this in the planning of our environment and routines here at Woodside.

The staff ratio for babies is **1:3** 1 adult to 3 babies.

OUR PHILOSOPHY

Our early years philosophy is based on a deep understanding of the way young babies and toddlers learn best; through 'quality care, nurturing play, learning experiences and quality interactions.'

We strive to ensure our children TRIVE!

NURSERY OPENING HOURS

The **Grasshopper Room**

Open from **8am-6pm** (Late fees apply) Monday-Friday.
(Please see fees booklet for 50 weeks charging structure).

The nursery is closed for **one week** at Easter, **one week** at Christmas and for **two weeks** at the end of August.



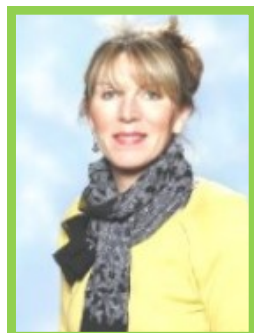
KEY STAFF CONTACTS



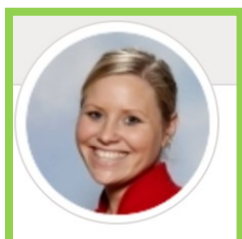
SHANE TEWES
HEAD TEACHER



NDIDI EVANS
HEAD OF SCHOOL



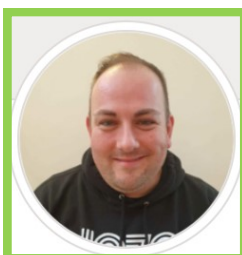
DAWN DAVIDSON
DAY CARE MANAGER



BECCA HILTON
DEPUTY DAY CARE MANAGER



PHOEBE SKEELS
ROOM LEADER



JOHN COGGIN
NURSERY OPERATIONS
MANAGER





GRASSHOPPER ROOM



CAUSE & EFFECT PLAY AREA

Play items to push, press, squeeze & react with

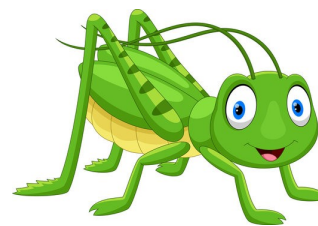
HOME CORNER

Role play based on life experiences



SENSORY & MUSIC PLAY AREA

Touch & feel & making sounds



MEAL & SNACK AREA

Area for relaxing & enjoying snacks and meals



MARK MAKING AREA

Creating marks using paint, pencils, crayons and other media

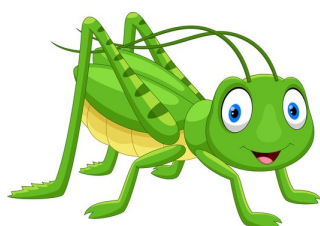
SMALL WORLD & CONSTRUCTION AREA

Building & play with toys in miniature





GRASSHOPPERS DAILY ROUTINE



8.00am-9.00am Breakfast time routine

9.00am-9.30am Free flow supported play & focused-play activities

9.30am-10.00am Garden open

10.00am-10.20am Snack time (light)

10.20am-11.10am Free flow supported play & care routine

11.10am – 11.20am Key Person- Active rhyme time

11.20am – 12.00pm Lunch time

12.00pm – 2.00pm Sleep time

2.00pm – 3.20pm Free flow supported play & care routine

3.20pm – 3.30pm Tidy up time (home habits)

3.30pm – 4.00pm Tea time

4.00pm – 5.00pm Free flow supported play & Key Person story time)

5.00pm Snack time (light)

5.00pm -5.45pm Free flow activities & Care routine

5.45pm -5.55pm Home time (Staff leave at 6pm)

(Routines are flexible)



GRASSHOPPERS SETTLING INFORMATION

We have a one week settling in period which builds to allow the child to see a whole nursery day.

- ♦ **Monday 1 hour** (9:15am-10:15am with snack) (First settle)
- ♦ **Tuesday 2 hours** (9:15-11:15 with snack)
- ♦ **Wednesday 4.5 hours** (8:00am-12:30pm with breakfast, snack and lunch)
- ♦ **Thursday 8.5 hours** (8:00am-4:30pm with breakfast, snack, lunch and tea) (Sleep time)
- ♦ **Friday 10 hours 8-6** with breakfast, snack, lunch & tea) (Sleep time)

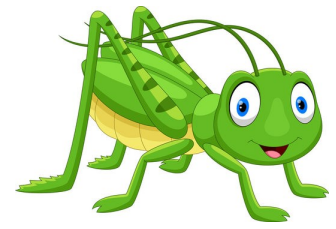
We support all children individually to settle & you will support your child alongside the key person.

This week can be adjusted to suit needs and requirements; also if a child is struggling with settling we can extend further.

ALL ABOUT ME BOOKLET

As parents you will be asked to share key information to support your child, when settling into the baby room.





BOOK AND SOFT PLAY AREA

Play with teddies, soft
equipment & looking at a
range of story and touch
& feel books



STORY AREA

This is where we sit for
story time & a place
where babies can relax &
look at books



FOOD & DRINK



NURSERY MENU

We believe that **nutrition** and a **balanced diet** is very important so we provide a balanced three weekly menu which is adjusted to meet the needs of our youngest babies, for example, we will liquidize food if required.

For full day care, we provide a **healthy** breakfast, snacks, as well as a **healthy** lunch and tea throughout the day.

We provide water throughout the day, including during snack and meal times.

DIETARY NEEDS

During the admission process we will ask you to provide details of any allergies or intolerances to food, as well as any particular dietary needs such as Vegetarian. All food provided at the nursery is Halal and is also **Nut-Free**.

We are a **Nut-Free** school.

Daily food orders will be adjusted according to the individual dietary needs of the children and staff will be made aware of this.

Posters will be displayed highlighting this to practitioners working with the children.

FOOD PREPARATION & STORAGE

FOOD STORAGE

We are **unable** to store food or warm food up on site. Food will be provided by the school caterers on site and adjusted to suit the needs of our babies.

BOTTLES

We are able to store bottles for feeding, however we are not able to sterilise. The correct amount of prepared bottles **MUST** be provided for the session attended and given to the key person on the day.



SLEEP AND REST

SLEEP ROUTINES

We understand that the children in our care will be adjusting to different routines and patterns of sleep.

Whilst we will have a main sleep time as part of our daily routine, we will of course adjust this to individuals while settling in, and will have a space provided for children who need to rest and sleep at other times of the day.

The individual sleep routine of your child will be discussed with you as part of the transition and settling process.

COMFORTERS AT SLEEP TIME

We know that to provide a safe and comfortable, home from home space for our babies, they will settle with a comforter such as a teddy, blanket, sleep bag or dummy (dummy weaning to be discussed).

As part of the transition process, we will discuss with any comforters your child usually has and they can be brought in to the nursery to be used to aid and support sleep.



SLEEP BEDS

We have individual sleep beds for the babies which have a sheet and a blanket.

These are washed once per week so that they are clean and fresh. We will also change them if they get wet or soiled for any reason.





LEARNING AND ASSESSMENT



EARLY YEARS FOUNDATION STAGE

The **Early Years Foundation Stage (EYFS)** is the Statutory Government guidance for all Early Years settings in England and was updated in September 2021.

At Woodside Primary Academy Nursery (REAch2), in line with all nurseries we follow this guidance to plan and assess the children during their journey through the nursery.

THE CHARACTERISTICS OF EFFECTIVE LEARNING

In planning and guiding what children learn, we reflect on the different rates at which children are developing and adjust their practice appropriately. The three characteristics of effective learning, which we plan for, are:

- ♦ **Playing and Exploring** – children investigate and experience things, and ‘have a go’.
- ♦ **Active Learning** – children concentrate and keep on trying if they encounter difficulties, and enjoy achievements.
- ♦ **Creating and Thinking Critically** – children have and develop their own ideas, make links between ideas, and develop strategies for doing things.

PRIME LEARNING AREAS

For children under 3 there are ‘**3**’ **prime areas** of learning that we use to support our planning:

Personal Social and Emotional Development

Communication and Language

Physical Development

We use these areas as a base to provide learning and to

Assess, ensuring each child is progressing well.

A statutory assessment will take place at aged two with your child’s key person alongside each parent.



LEARNING AND ASSESSMENT



STORY TIME



We think it is very important to read with the children daily. As part of the routine we have a story and singing session to develop language and comprehension, personal and social skills and a love for books. Books are also on offer for the children to access at all times during the free flow play sessions.

RHYME TIME



At nursery we will be singing and learning lots of new nursery rhymes, at home you can start by singing simple nursery rhymes such as

'Twinkle twinkle little star' or 'The wheels on the bus.'

TAKING SHOES OFF



We will ask all of the children, staff, parents and carers, in the baby room to take off their shoes.

This is for health and hygiene reasons.



LEARNING AND ASSESSMENT

TAPESTRY APP

Your Child's Learning Journey via the Tapestry App

We assess the children using the Tapestry App.

Parents are encouraged to contribute to their child's learning from home via the 'Tapestry App'. Parents are able to add videos, photographs and work samples to their child's online learning journey.

The nursery team use the 'Tapestry App' to create a time map of each child's learning journey by gathering children's work samples through:

- ♦ Photographs, video recordings and written observation notes of the children to support planning for each child's next steps and learning, interests.
- ♦ The learning journey and the teams observations are used to assess each child's progress while in the Early Years at Woodside. Parents can comment on what is uploaded by the staff team.

You can download the app and we will send you a link to set up an account. All of your child's observations of their learning, as well as photos, will be updated regularly using The Tapestry online application.





KEY PERSON AND COMFORTERS



KEY PERSON

All children will be allocated a practitioner as a key person. They will support with the settling and transition processes, as well as make assessments of your child while they are in Grasshopper Room. You can speak to the key person, room lead or any member of the leadership team, at any time about your child.



COMFORTERS AND SOOTHERS

We understand that children may have a comforter such as a blanket, teddy, toy or dummy. These can be brought into the nursery to be used to sooth and comfort, especially at sleep time.

If they do have a particular item, please discuss this with the key person during the settling process.

Our policy is to use dummies only as comforters at key times such as sleep time. And to wean babies off using them in collaboration with parents.

To aid the development of speech and so that children don't become reliant on them, we will encourage that they are put away and will only come out at sleep time, or times of distress, as a comfort.



NAPPY CHANGING & INTIMATE CARE



NAPPIES & WIPES

Parents and carers are asked to provide an adequate amount of **nappies, wipes and creams for the whole session (8-6)**

Please have a chat with us about the nappies you use, e.g. disposable or re-usable, or if training to use the toilet. Also if your child is allergic to a particular brand or has a particular wipe.



NAPPY CREAMS

If you use a regular nappy cream, or if at any stage your child has nappy sores, please let us know.

We will discuss this with you as part of the settling in process.

CHANGE OF CLOTHES

During the settling process you will be given a **complimentary red baby grow and also a grey bib**, with the Woodside logo on it.

Please bring a **labelled bag** for each session, with some changes of clothes in case they get wet, dirty or soiled.

INTIMATE CARE

We have an Intimate Care Policy in place at the nursery and this forms part of our safeguarding procedures.

Children will always be changed in a designated safe and private area.

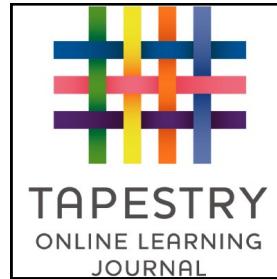
We will always ensure the child's dignity and provide gentle care whilst making the process a playful experience.



WOODSIDE BIB & BABYGROW

Each baby will receive a **complimentary** red baby grow and bib with the Woodside logo!





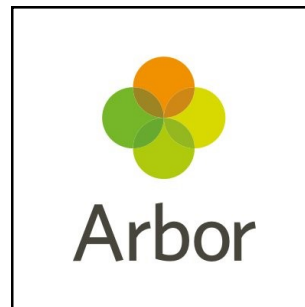
TAPESTRY CARE DIARY & ARBOR ACCOUNT

TAPESTRY CARE DIARY

We use the Tapestry Care Diary to let you know exactly what is happening with your child throughout the day.

We will mark on there what they have been eating, nappy changes, and sleep times.

When your child starts we will send you a link to set this up.



ARBOR APPLICATION

Arbor is our school data system and is used to book nursery and school events and pay for lunch meals as your child progresses through the school.

When your child starts, you can download the Arbor app and ask the nursery office to send you an e-mail link.





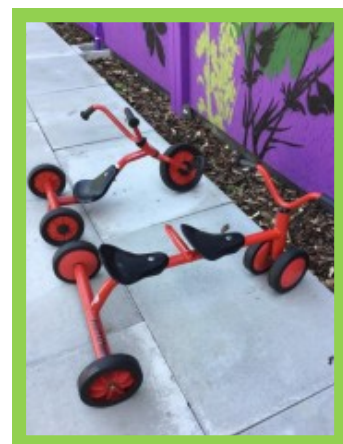
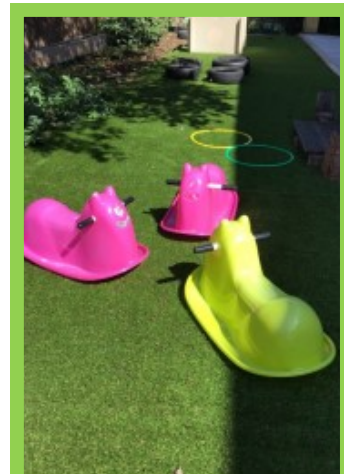
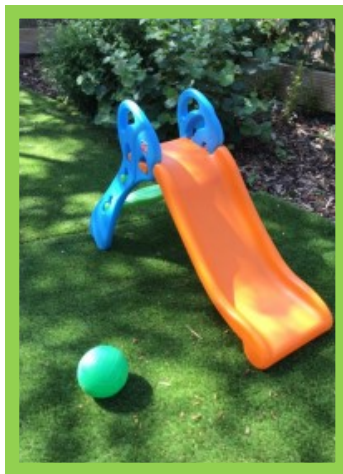
OUTDOOR PLAY

OUTDOOR PLAY

In Grasshoppers, we will have daily access to the outdoor garden area.

The garden is located at the rear of the building and is shared with the 2 year-olds, however we will have our own time outside in the garden area as well. This means all of the equipment and resources are age appropriate.

On occasion ,when we may share the garden with the 2 year olds, they will be fully supported and supervised by their staff.





OTHER INFORMATION



CONTACT US

NURSERY DIRECT LINE

020 8509 4375

ENQUIRIES OR REPORTING ABSENCE

nursery@woodside-academy.org

ARRIVING AT NURSERY

The entrance is on Corbett Road off Wood Street.

Please go straight to the side gate and press the buzzer, then come to the main entrance and ring the bell.



This is the nursery baby building main entrance.